

THAMES VALLEY & WESSEX NEONATAL OPERATIONAL DELIVERY NETWORK

THAMES VALLEY & WESSEX ODN NEONATAL SURGICAL PATHWAY	
Approved by/ on:	Thames Valley & Wessex Neonatal ODN Governance Group March 2023
Date of publication	September 2017. Reviewed August 2018
Last Reviewed	March 2023
Review date (<i>Max 3 years</i>)	March 2026
Authors	Dr Victoria Puddy Thames Valley & Wessex Clinical Lead Dr Eleri Adams Consultant Neonatologist OUH Dr Lambri Yianni Thames Valley & Wessex Neonatal Transformation Clinical Lead
Distribution	Thames Valley and Wessex Neonatal Clinical Forums Thames Valley and Wessex Neonatal Network website
Related documents	<p>British Association of Perinatal Medicine (BAPM) Service Standards (August 2010)</p> <p>Report of Department of Health Expert Working Group on Neonatal Intensive Care Services (2003)</p> <p>Department of Health: Toolkit for High Quality Neonatal Services (2009)</p> <p>NHS England Neonatal Critical Care (Intensive Care, HDU and Special Care) Service Specification E08/S/a</p> <p>NHS England Neonatal Intensive Care, Transport. Service Specification E08/S/b</p> <p>NHS England Paediatric Surgery: Neonates - Service Specification E02/S/c</p>
Implications of race, equality & other diversity duties for this document	This guideline must be implemented fairly and without prejudice whether on the grounds of race, gender, sexual orientation or religion.

1.0 Aim of Pathway

The aim of TV & Wessex Neonatal surgical pathway is to describe the care pathway for neonates who have been identified as having a surgical abnormality within Thames Valley and Wessex Neonatal Network.

2.0 Scope of Pathways

This pathway applies to all neonatal and maternity units covered by Thames Valley Neonatal Network. This includes the following hospitals:

Thames Valley		
TRUST	Hospital	Designation
Oxford University Hospitals NHS Foundation Trust	- John Radcliffe Hospital, Oxford	NICU
Buckinghamshire Healthcare NHS Trust	- Stoke Mandeville Hospital, Aylesbury	LNU
Frimley Health NHS Foundation Trust	- Wexham Park Hospital, Slough	LNU
Milton Keynes University Hospital NHS Foundation Trust	- Milton Keynes General Hospital	LNU
Royal Berkshire NHS Foundation Trust	- Reading	LNU

Wessex		
TRUST	Hospital	Designation
University Hospital Southampton NHS Foundation Trust	- Princess Anne Hospital	NICU
Portsmouth Hospitals University NHS Trust	- Queen Alexandra Hospital	NICU
Dorset County Hospital NHS Foundation Trust	- Dorset County Hospital, Dorchester	SCU
Hampshire Hospitals NHS Foundation Trust	- Basingstoke and North Hampshire Hospital	LNU
Hampshire Hospitals NHS Foundation Trust	- Royal Hampshire County Hospital, Winchester	LNU
Isle of Wight NHS Trust	- St Mary's Hospital	SCU
University Hospitals Dorset NHS Foundation Trust	- Poole Hospital	LNU
Salisbury NHS Foundation Trust	- Salisbury District Hospital	LNU
University Hospitals Sussex NHS Foundation Trust	- St Richard's Hospital, Chichester	SCU

3.0 Background

Congenital surgical lesions /abnormalities are uncommon. Around 3% of newborns have a major physical anomaly, including cardiac and/or neurological abnormalities. Not all congenital abnormalities will need surgery and many will not require intervention in the neonatal period. However, there are a number of congenital conditions that are known to require surgical intervention in the neonatal period. In addition, there are a small number of newborns without congenital anomaly who will develop conditions that require surgery in the neonatal period.

4.0 Principles

Key principles which have been agreed nationally and are widely accepted include:

- Neonatal surgical services are specialised and should be provided in designated neonatal surgical centres co located with neonatal intensive care units (NICUs), specialised children's surgery/anaesthesia and maternity services
- Neonatal surgical services are provided within designated surgical centres within a managed network of care
- Individual Trusts are responsible for ensuring neonates requiring surgery should be referred to the designated centre where surgical, and neonatal intensive care capacity is available.
- In situations where an antenatal complex surgical diagnosis is made it is expected that women will be referred for ongoing antenatal care to the fetal medicine service and booked for delivery at a designated surgical centre with neonatal intensive care services e.g. Gastroschisis, congenital diaphragmatic hernia.
- Neonates requiring surgery should be referred to the designated centre, where both surgical, anaesthetic and ITU capacity are available.
- Neonatal surgical care should be provided in a centre as close to the neonates home or booked hospital as possible

Appendices:

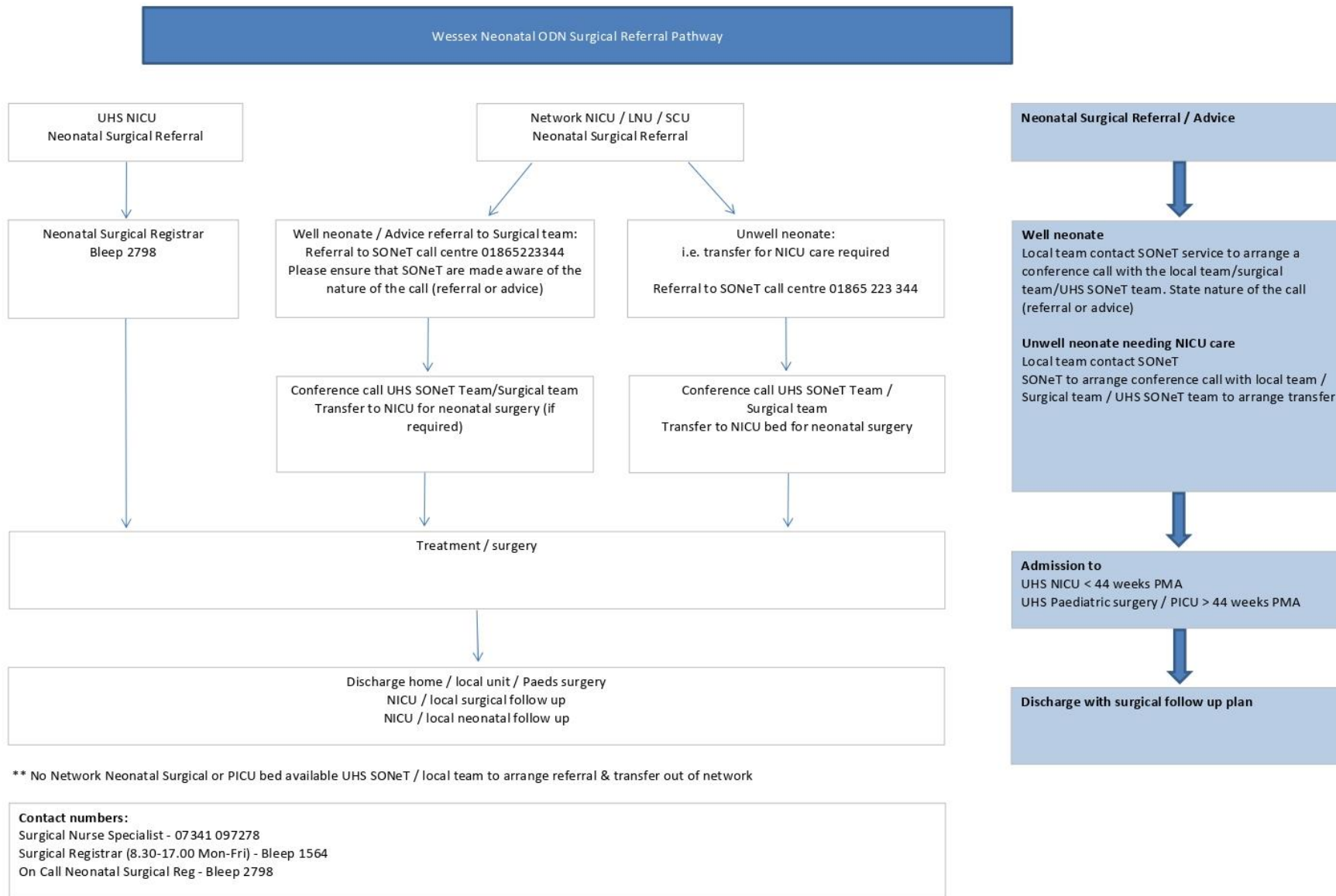
Appendix 1: Wessex Neonatal ODN Surgical pathway

Appendix 2: Thames Valley Neonatal ODN surgical pathway

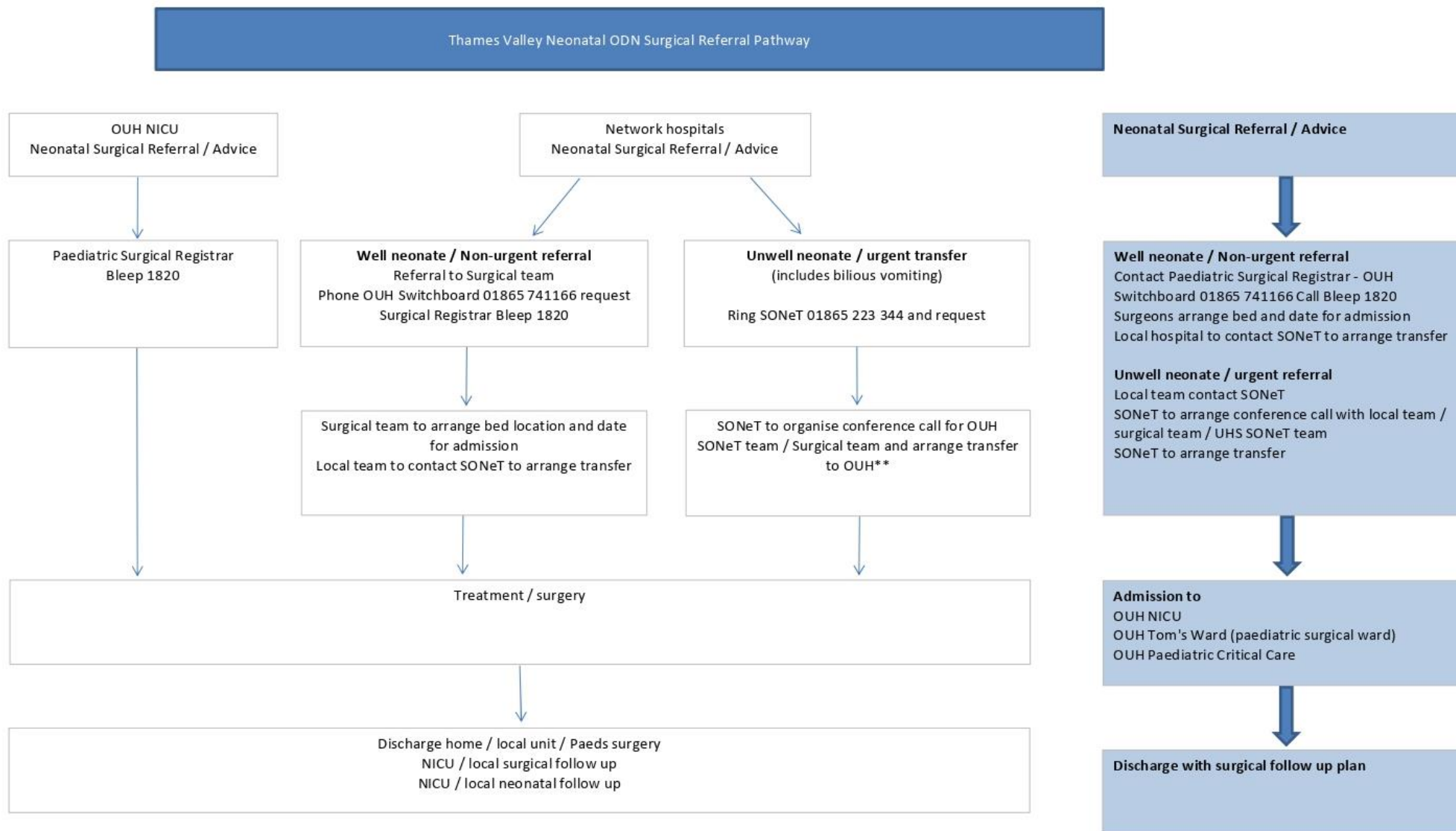
Version Control:

Version	Date	Details	Author(s)	Comments
1.0	September 2017		Dr Victoria Puddy Dr Eleri Adams	Reviewed at TV and W Clinical Forums
4.0	October 2017	Following amendments Draft v4 finalised for ratification	Dr Victoria Puddy Dr Eleri Adams	Ratified Oct 2017
4.1	August 2018	Following amendments IOW redesignation and new website http	Dr Victoria Puddy Dr Eleri Adams	Ratified September 2018
5.0	January 2023	Review of contact numbers and addition of contact information	Dr Lambri Yianni	For ratification March 23
5.1	March 2023	Amendment to Appendix 1 pathway	Dr Lambri Yianni	For ratification March 23
Review Date:	March 2026			

Appendix 1 : Wessex Neonatal ODN Surgical Pathway



Appendix 2: Thames Valley Neonatal ODN Surgical Pathway



** SONEt to find nearest appropriate neonatal surgical bed if none available in network