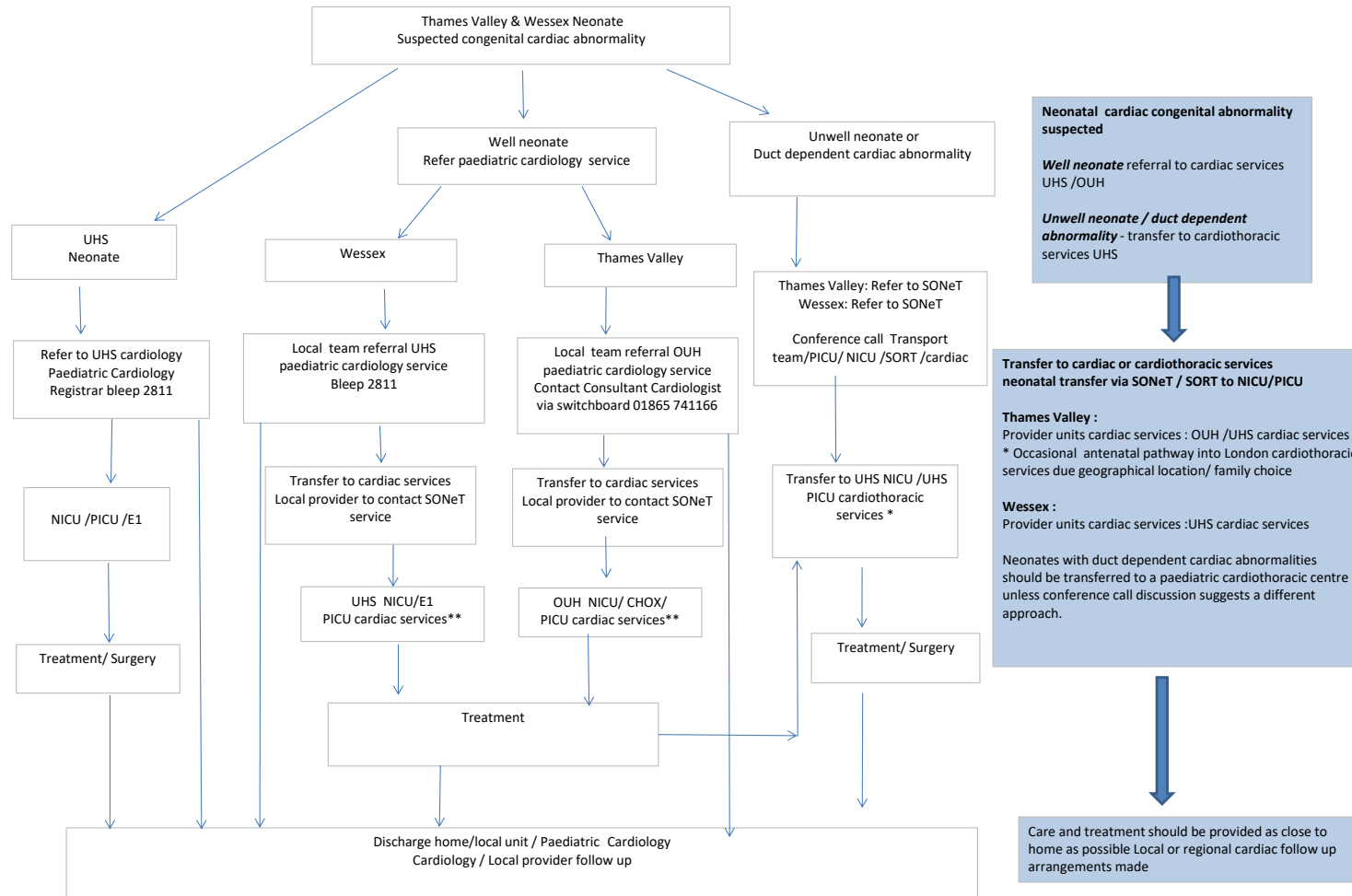


TV & Wessex Neonatal Cardiac Referral Pathway



** No Network Neonatal cardiac bed available SONEt/ SORT to arrange referral & transfer out of network

For babies with suspected cardiac abnormality identified through failed neonatal pulse oximetry screening (POS) , follow the POS guideline pathway

TVW Neonatal Cardiac Care Pathway v1.3 ratified March 2023 Appendix 2

Neonatal Generic email: england.tv-w-neonatalnetwork@nhs.net

Neonatal website: www.neonatalnetworksoutheast.nhs.uk