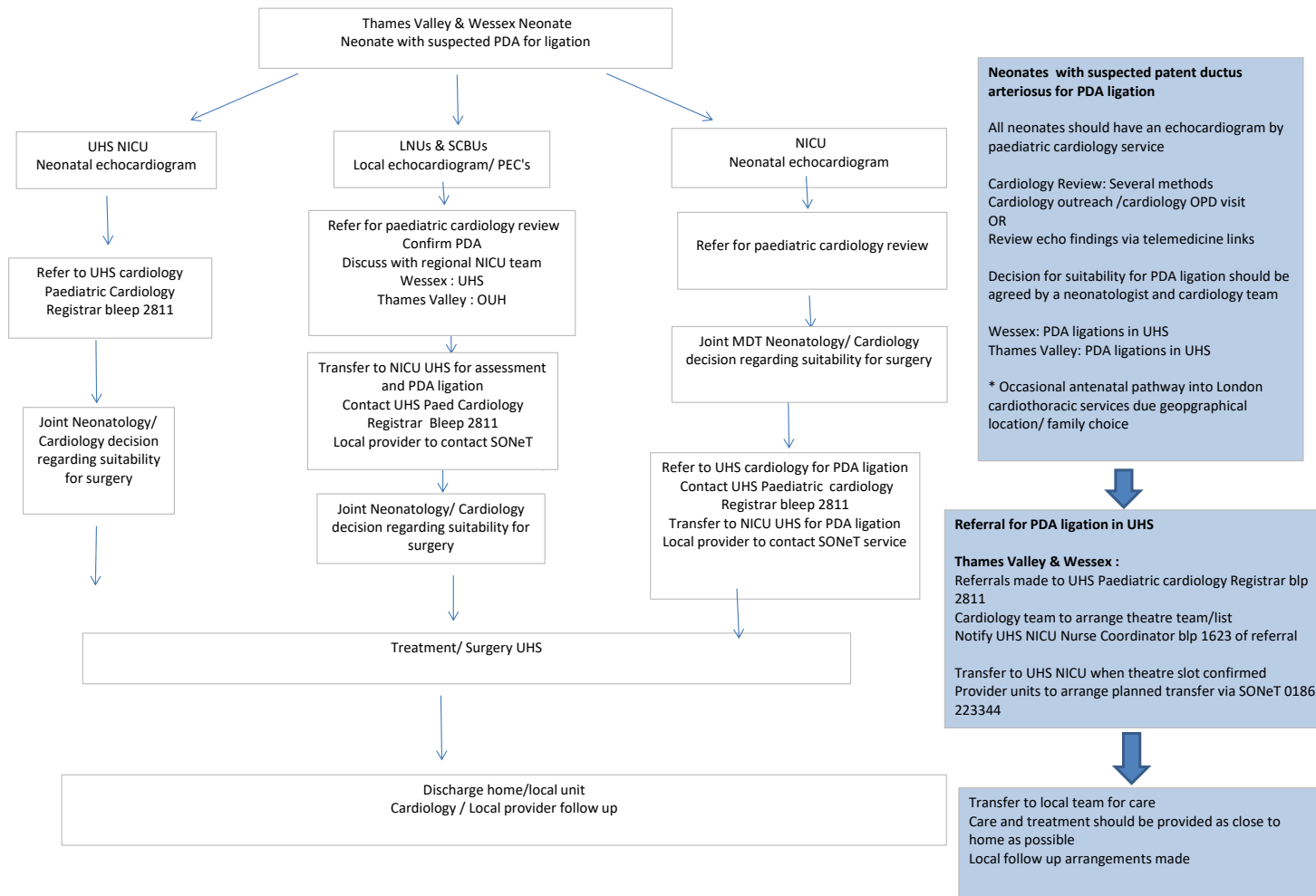


TV & Wessex Neonatal PDA ligation Referral Pathway



**Neonates with suspected patent ductus arteriosus for PDA ligation**

All neonates should have an echocardiogram by paediatric cardiology service

Cardiology Review: Several methods  
Cardiology outreach /cardiology OPD visit  
OR  
Review echo findings via telemedicine links

Decision for suitability for PDA ligation should be agreed by a neonatologist and cardiology team

Wessex: PDA ligations in UHS  
Thames Valley: PDA ligations in UHS

\* Occasional antenatal pathway into London cardiothoracic services due geographical location/ family choice

**Referral for PDA ligation in UHS**

**Thames Valley & Wessex :**  
Referrals made to UHS Paediatric cardiology Registrar blp 2811  
Cardiology team to arrange theatre team/list  
Notify UHS NICU Nurse Coordinator blp 1623 of referral

Transfer to UHS NICU when theatre slot confirmed  
Provider units to arrange planned transfer via SONeT 01865 223344

Transfer to local team for care  
Care and treatment should be provided as close to home as possible  
Local follow up arrangements made

\*\* No Network Neonatal NICU or PICU bed available UHS SONeT / local team to arrange referral & transfer out of network  
PEC's : Paediatrician with Expertise in Cardiology